

VETERINARY SERVICES DIAGNOSTIC LABORATORY

OUR MANDATE

- To be the premier testing institution in the Caribbean region for pesticides, heavy metals, biotoxins and veterinary drug residues in foods of animal origin
- To safeguard animal and public health
- To ensure the safety of foods of animal origin in order to facilitate trade

Features of RBL

- **Advanced Equipment**
- **Highly Trained Analysts**
- **Efficient Service**
- **Quick Turnaround time**
- **Low cost**
- **Credible Results**

Veterinary Services Division MANDATE

- **Keeping exotic diseases out of Jamaica**
- **Safeguarding the Livestock Industry**
- **Facilitating Trade**
- **Improving Public Health**
- **Enhancing Food Safety**
- **Promoting Animal Welfare**

OPENING HOURS:

Monday to Thursday 8:30 am to 5:00 pm
Friday 8:30 am to 4:00 pm

SAMPLE RECEPTION HOURS:

Monday to Thursday 8:30 am. to 4:00 pm.
Friday 8:30 am. to 3:00 pm.

RESIDUE & BIOCHEMICAL LABORATORY

193 Old Hope Road
Kingston 6
Jamaica

Telephone: (876) 977-2489 /977-2492;977-2489

Fax: (876) 977-0885

Email: vsd@moa.gov.jm



Ministry of Agriculture, Fisheries
and Mining
VETERINARY SERVICES DIVISION

RESIDUE MONITORING & ANALYSIS LAB.

We aim to become a regional centre of excellence offering veterinary analytical and diagnostic services of the highest quality to the agriculture and public health sectors



LABORATORY

The Residue & Biochemical Laboratory (RBL) conducts numerous programmes aimed at facilitating export and protecting public and animal health. These include:

- National Residue Monitoring Programme
- The Conch & Lobster Monitoring Programme
- Imported Meat Products & By-products Monitoring Programme

National Residue Monitoring Programme (NRMP)

The NRMP covers Aquaculture, Honey and Livestock products. This plan is laid out in accordance with European Union Council Directive 96/23EC and is in compliance with USDA/APHIS/FSIS regulations which require that all countries exporting animal products and by products implement a Residue Monitoring Programme.

Conch & Lobster Monitoring Programme

This programme involves the collection and analysis of conch, lobster and sea water from harvesting sites. The conch and lobster samples are tested for biotoxins and environmental contaminants. The water samples are analysed for toxic phytoplankton and environmental contaminants.

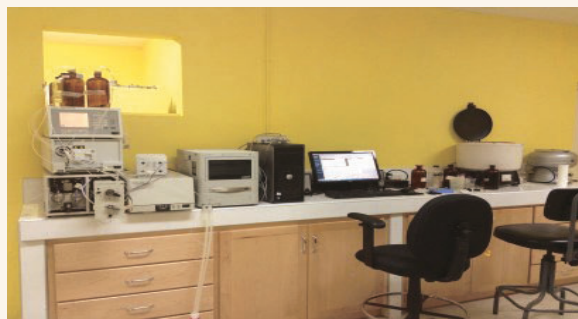
SERVICES

Monitoring of Imported Food of Animal Origin

Monitoring of imported food of animal origin is done to ensure the wholesomeness of foods for local consumption. Imported animal products and by-products are tested for veterinary drug residues, heavy metals, and pesticides.

HEAVY METAL ANALYSIS

Cadmium Including;
Lead, Mercury
Copper, Iron, Zinc



PESTICIDE ANALYSIS

- Organochlorides
- Organophosphates
- Polychlorinated Bi-Phenyls (PCBs)

AND PROGRAMMES

BIOTOXINS

Amnesic Shellfish Poisoning (ASP)
Ciguatera Fish Poisoning
Paralytic Shellfish Poisoning (PSP)
Lipophilic Toxins

PHYTOPLANKTON ENUMERATION & IDENTIFICATION

Water samples are collected from harvesting areas to be analyzed for toxic dinoflagellates.

